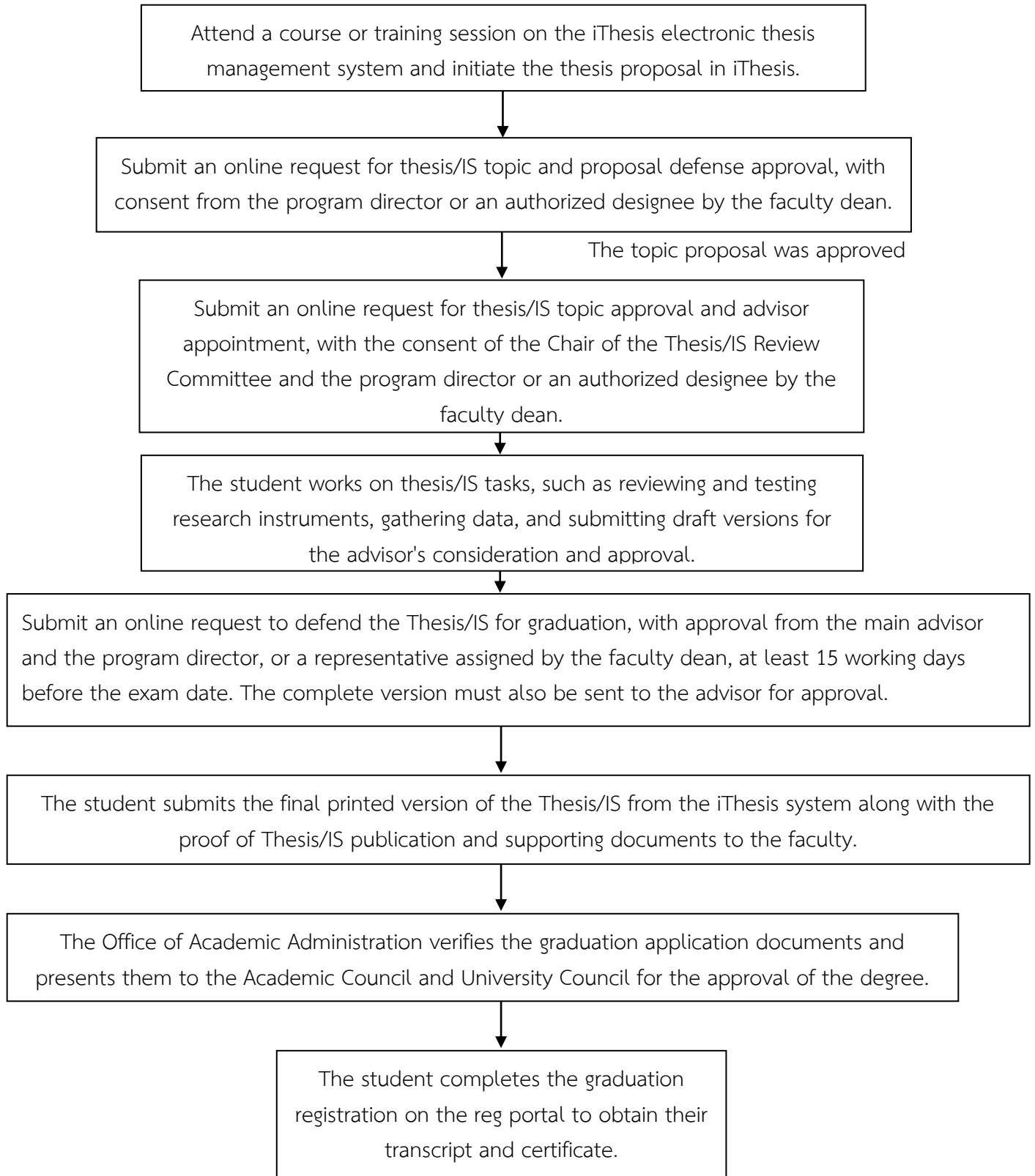


Framework for Thesis and Independent Study Development



1. Thesis/Independent Study Topic Examination

1. Consult your advisor to find a thesis/IS topic.
2. Conduct THESIS / IS using the iThesis system.
3. Apply online for the assessment of your THESIS/IS topic at reg.su.ac.th, detailing the topic, scheduled date, time, examination location, and the members of the committee.

Ph.D. Level

A committee shall be formed with at least 5 members, including:

Criteria 2015 Faculty members and/or external professionals

- For regular program faculty members, a doctoral degree or a master's degree (associate professor) is required, along with three academic works published in the last five years (one of which must be research).
- For external experts, a doctoral degree is required, along with five international publications (as per the Office of Higher Education Commission announcement).

Criteria 2022 Faculty members from the program, instructors, researchers, and/or external specialists

- In the case of a regular program faculty members, course instructor or permanent researcher, a doctoral degree or a master's degree (with associate professor) is required, along with three academic works published in the last five years (one of which must be research).
- For external experts, a doctoral degree is required, along with ten publications recognized at both national and international standards.

Master Level

A committee shall be formed with at least 3 members, including:

Criteria 2015 Faculty members and/or external professionals

- For regular program faculty members, a doctoral degree or a master's degree (associate professor) is required, along with three academic works published in the last five years (one of which must be research).
- For external experts, a doctoral degree is required, along with 10 national publications (TCI1/2)

Criteria 2022 Faculty members from the program, instructors, researchers, and/or external specialists

- In the case of a regular program faculty members, course instructor or permanent researcher, a doctoral degree or a master's degree (with associate professor) is required, along with three academic works published in the last five years (one of which must be research).
 - For external experts, a doctoral degree is required, along with 5 national/international publications.
4. Print the data from the Reg system (request form + details of the external expert) with approval from the advisor, the head of the department/program director, and then, and submit it to the faculty to which the student belongs.
 5. Upon completion of the topic assessment, revise the content in line with the committee's feedback.
 6. Submit for the approval of thesis/IS topic and the assignment of a thesis advisor.

2. Thesis/Independent Study Topic Approval and Advisor Designation

Once the student has passed the topic approval examination, proceed with the following steps

- Submit an online request for thesis topic approval and appointment of thesis/IS advisor (GS.2) via reg.su.ac.th. Indicate the thesis title in both Thai and English, and include the names of the main thesis advisor and any co-advisors (if any), limited to a maximum of two. For IS, provide the advisor's name, limited to one person.
- Print the request form GS. 2 with the approval of the chair of the topic review committee and the head of the department/curriculum administrator, and submit it to the faculty to which the student belongs.
- Upon approval of the thesis topic and designation of an advisor, students are required to enroll in THESIS/IS for every semester until graduation.

Ph.D. Level

Criteria 2015

1. The main thesis advisor is required to be a program faculty member holding a Ph.D./Master's degree (associate professor), along with three academic works published in the last five years (one of which must be research)

2. The co-thesis advisor (if any) may be a faculty member or an external expert

In the case of a faculty member, they must hold the same qualifications and have similar academic contributions as the main advisor.

If an external expert is appointed, they must hold a Ph.D. and have at least 5 international publications (as specified by the Higher Education Commission).

Criteria 2022

1. The main thesis advisor / IS advisor must be a program faculty member, holding a Ph.D. or Master's degree (associate professor), along with three academic works published in the last five years (one of which must be research).

2. At least one co-advisor for the thesis must be a program faculty member, a regular faculty member, a researcher, or an external expert.

If they are a program faculty member, regular faculty member, or researcher, they must have qualifications and academic achievements equivalent to those of the main advisor.

If they are an external expert, they must hold a doctoral degree and have at least 10 published works in recognized databases.

Master Level

Criteria 2015

1. The main thesis/IS advisor is required to be a program faculty member holding a Ph.D./Master's degree (associate professor), along with three academic works published in the last five years (one of which must be research)

2. The co-thesis advisor (if any) may be a faculty member or an external expert

In the case of a faculty member, they must hold the same qualifications and have similar academic contributions as the main advisor.

If an external expert is appointed, they must hold a Ph.D. and have at least 5 international publications (as specified by the Higher Education Commission).

Criteria 2022

1. The main thesis/IS advisor is required to be a program faculty member holding a Ph.D./Master's degree (associate professor), along with three academic works published in the last five years (one of which must be research)

2. The co-thesis advisor (if any) may be a program faculty member, a regular faculty member, researcher, or an external expert.

In the case of a program faculty member, a regular faculty member or researcher, they must hold the same qualifications and have similar academic contributions as the main advisor.

If they are an external expert, they must hold a doctoral degree and have at least 5 published works in recognized databases.

The deadline for thesis topic approval

(Exceeding the time limit will result in the termination of student status)

1. Ph.D. Level - Students admitted with a Master's degree must have the thesis topic approved within 3 years (6 semesters)

- Students admitted with a bachelor's degree must have the thesis topic approved within 5 years (10 semesters).

Remark Students must pass the qualifying exam and fulfill the conditions set by the program.

2. Master Level Students must have the thesis topic approved within 3 years (6 semesters)

Remark Students must fulfill the conditions set by the program.

- Once the thesis topic is approved and a main thesis advisor or IS advisor is appointed, the student must immediately register for THESIS/IS during the designated registration period according to the academic calendar. Registration must continue every semester thereafter until the student graduates.

3. Thesis / Independent Study (IS) Examination for Graduation

1. The student has completed the thesis/IS.
2. Students must complete all required courses as outlined in the curriculum
3. Students must have passed the English proficiency exam and the comprehensive/qualifying exam
4. Fulfill all requirements outlined in the curriculum
5. Submit a thesis/IS examination request (GS.3) via the reg.su.ac.th website, with approval from the thesis/IS advisor and the program director or a designee authorized by the faculty dean.

Ph.D. Level

The examination panel shall be composed of a minimum of 5 members.

Criteria 2015

1. The chairperson is an external expert.
2. A faculty member of the program
3. Advisor

In the case of a program faculty member, they must hold a Ph.D./Master's degree (associate professor), along with three academic works published in the last five years (one of which must be research)

If an external expert is appointed, they must hold a Ph.D. and have at least 5 international publications (as specified by the Higher Education Commission).

Criteria 2022

1. A minimum of 2 external examiners (1 to serve as chair)
2. A program faculty member/regular faculty member/researcher
3. Advisor

In the case of a program faculty member, a regular faculty member or researcher, they must hold a Ph.D./Master's degree (associate professor), along with three academic works published in the last five years

For external experts, they must have a doctoral qualification and at least 10 publications in recognized databases that are relevant to the thesis topic.

Master Level

The examination panel shall be composed of a minimum of 3 members.

Criteria 2015

1. An external expert
2. A faculty member of the program
3. Thesis/IS advisor

In the case of a program faculty member, they must hold a Ph.D./Master's degree (associate professor), along with three academic works published in the last five years (one of which must be research)

If an external expert is appointed, they must hold a Ph.D. degree, along with 10 national publications (TCI1/2).

Criteria 2022

1. An external expert
2. A program faculty member/a regular faculty member/researcher
3. Thesis/IS advisor

In the case of a program faculty member, a regular faculty member or researcher, they must hold a Ph.D./Master's degree (associate professor), along with three academic works published in the last five years (one of which must be research).

For external experts, they must have a doctoral qualification and at least 5 publications in recognized databases that are relevant to the thesis topic.

Remark

The chairperson of the examination committee must not be the primary or co-advisor for the thesis.

7. Set the date, time, location for the examination, and details of the external expert.
8. Students must submit their affiliated faculty/department at least 15 working days before the examination date.
9. The academic administration division verifies qualifications and issues an appointment order for the examination committee along with an invitation letter requesting approval from the relevant authority.
10. Revise the THESIS/IS according to the committee's recommendations and complete it within 45 days from the date of the examination, but no later than the student's study period.
11. The THESIS/IS must be published in accordance with the graduate program's specific publication requirements.